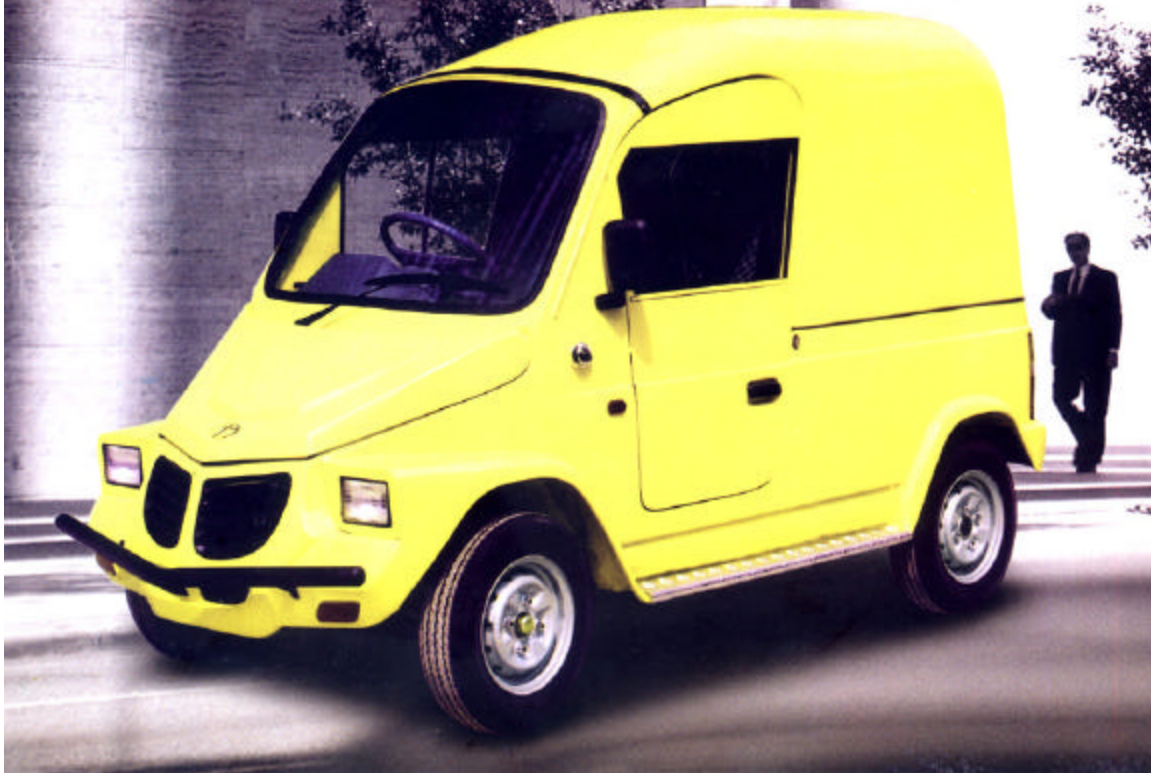




**IMC**

**Bay**

**(Delivery Van)**



# BAY DELIVERY VAN (TB-102DV)

## S P E C I F I C A T I O N

### DIMENSIONS

Length (mm)	2900
Width (mm)	1360
Height (mm)	1800
Wheel Base (mm)	1880
Ground Clearance (mm)	170

### BODY / CHASSIS

Reinforced Ladder Type Steel Chassis Steel Body w/High Strength Pipe Frame

### POWER TRAIN

Engine	Single Cylinder Four Stroke Water Cooled
Piston Displacement (cc)	196.9
Bore & Stroke (mm)	63.5 x 62.2
Maximum Out Put (KW@RPM)	14.00@7500
Maximum Torque (N.m@RPM)	16.14@6000
Transmission Type	4 Speed sequential with auxiliary reverse Assy

### Drive

Rear Wheel through  
propeller shaft

### Clutch

Wet type, 7 plates

### Fuel

Gasoline/CNG\*

### WHEEL & SUSPENSION

Tyre Size	4.50-12
Suspension front	Mc Pherson Strut with Coil Spring
Rear	Leaf Spring with Shock Absorber

\* Optional



Orange



Light Blue



Lemon Yellow



White



40-10011

**Disclaimer:** The Actual product may vary in colour, specification & features. Specifications are subject to change without prior notice.

Authorized Dealer:



**Transmission Motor Company (Pvt.) Ltd.**

Head Office: B-14, Block-A, S.M.C.H.S, Karachi-74400, Pakistan. UAN: 111-000-TMC (862)  
Fax: +92-21-4556245 Email: tmc@khi.wol.net.pk http://www.tmc.pk